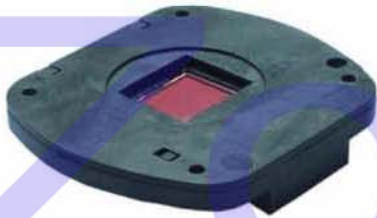


ZHS-0603 IR-CUT

ISO/TS16949 ISO9000 ISO14000
RoHS REACH CE UL VDE TÜV



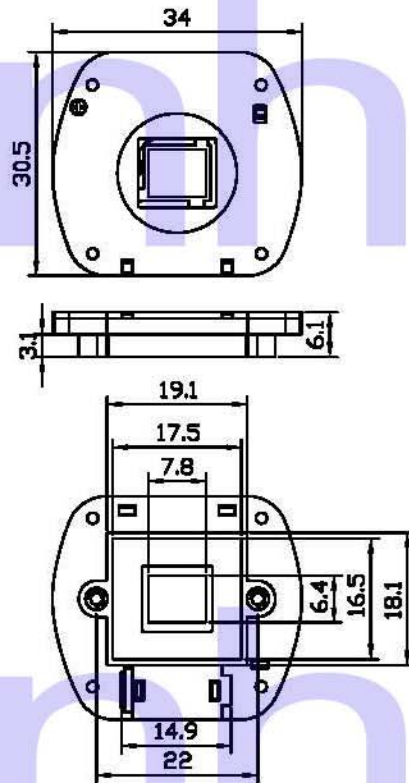
总重量 Total Weight: 4.1g
应用范围: 监控摄像机
APPLICATION: CCTV Camera

综合特性

Characteristics:

1. 驱动类型: 励磁式
Drive Type: Excitation Type
2. 工作电压: DC 4.5-12V
Voltage :DC 4.5-12V
3. 工作环境 Operating Environment:
温度: -30 ~ 85℃
湿度: 0 ~ 90%
Temp: -30 ~ 85℃
Relative humidity: 0 ~ 90%
4. 滤光片切换响应时间: 50ms
Response time: 50ms
5. 寿命: 典型值为10万次 (on 0.05s, off 0.25s)
Lify cycle: 1,000, 00 cycles (on 0.05s, off 0.25s)
6. 绝缘等级: B类
Insulation class: class B
7. 安装CCD和CMOS芯片的窗口高度A和孔距B尺寸及镜头座可以提供不同规格, 并可以按客户要求定做. There are several window height size and hole distance size for selection, also can do according to customer requirments

类型Type: M12

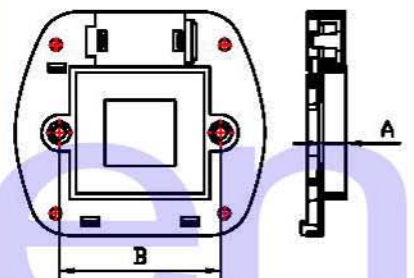


单位:mm Units:mm

固定座典型结构
Lens holder type:



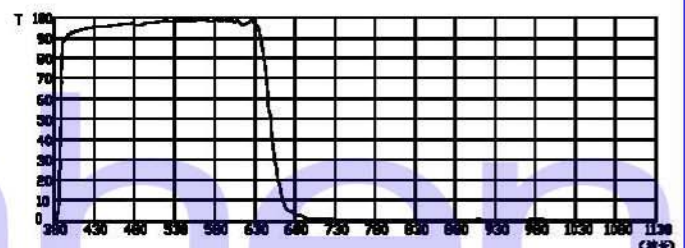
下底座关键尺寸
Bottom base size:



窗口高Window Height: A=3.1
孔距Hole Distance: B=22

镜片光谱图

1. IR Filter spectrum :



2. AR Filter spectrum :

